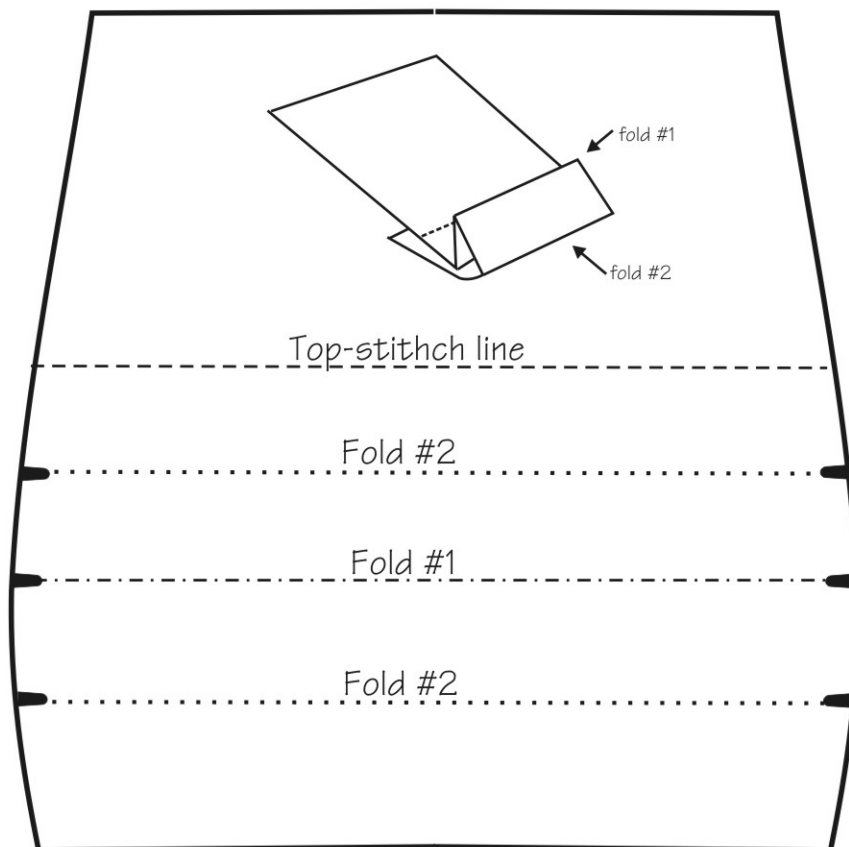


Adams-Harris Pattern Company

All rights reserved, 2006

Ski Cap for Marley



Directions:

Cut 1, from stretch knits such as cotton jersey, cotton/lycra jersey

1. Fold on line #1 with wrong sides together and top stitch in place.
 2. Fold up on line #2 at notches with right sides together and pin in place.
- #.With right side together fold hat in half lengthwise matching the folded edges and hem. Baste in place, the machine sew from edge of hat thru the folded layers to the corner, turn and sew off the top of hat.

This box should print out
1 inch by 1 inch

